

Quick Start

1

Rackmount the SnapStream Enterprise TV Server

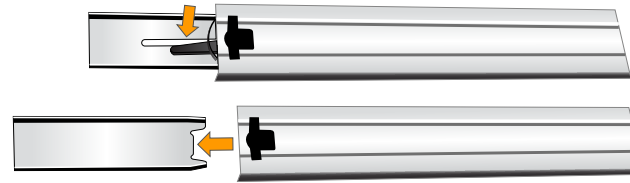
If your SnapStream Enterprise TV Server was provided with rackmount rails, install those rails on server unit and then install the SnapStream Enterprise TV Server in your server rack.

If you have a tower case, proceed to step 2

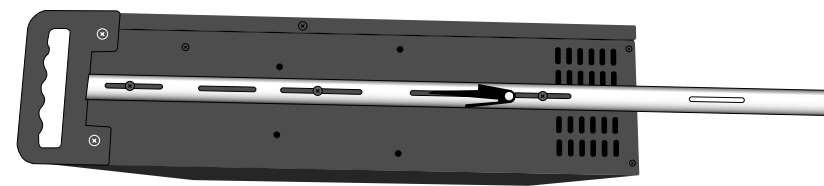
1-1 Pull the center slide out until the rail is fully expanded.



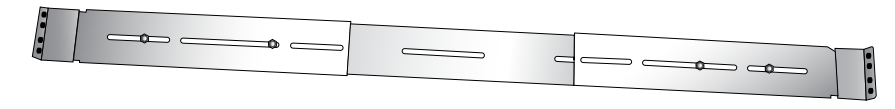
1-2 You will see a black plastic tab where the center slide joins the rest of the rail assembly. Press this tab to the right to release the center slide. Remove the slide from the rail assembly.



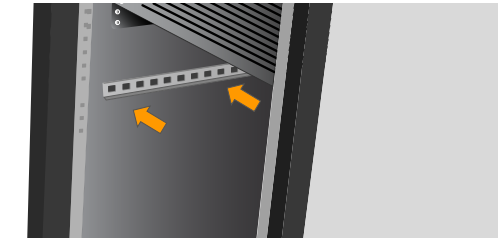
1-3 Attach one center slide to each side of the Enterprise Server using the screws provided and the existing holes in the server chassis. The open ends of the slides should face the rear of the server.



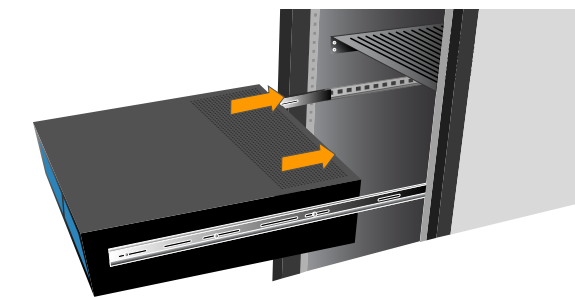
1-4 Attach the rack mounts to either end of the rail assembly using the screws and nuts provided.



1-5 Install the rail assembly in your server rack using the screws provided.



1-6 Carefully lift the server and insert the ends of the center slides into the rail assembly. The server should slide in and out smoothly on the rails.



2

Connect TV Source (DirecTV)

Using the included cables, connect your DirecTV receiver to the SnapStream Enterprise TV Server.

2-1 Connect the multi port USB serial adapter to a USB port on the back of the server. Connect the multi port adapter to power. **Optional:** Rackmount your multi port adapter.

2-2 Label each of your set-top boxes (STBs) with a number: 1, 2, 3, 4, etc.

The following steps will be repeated for each STB, beginning with number 1

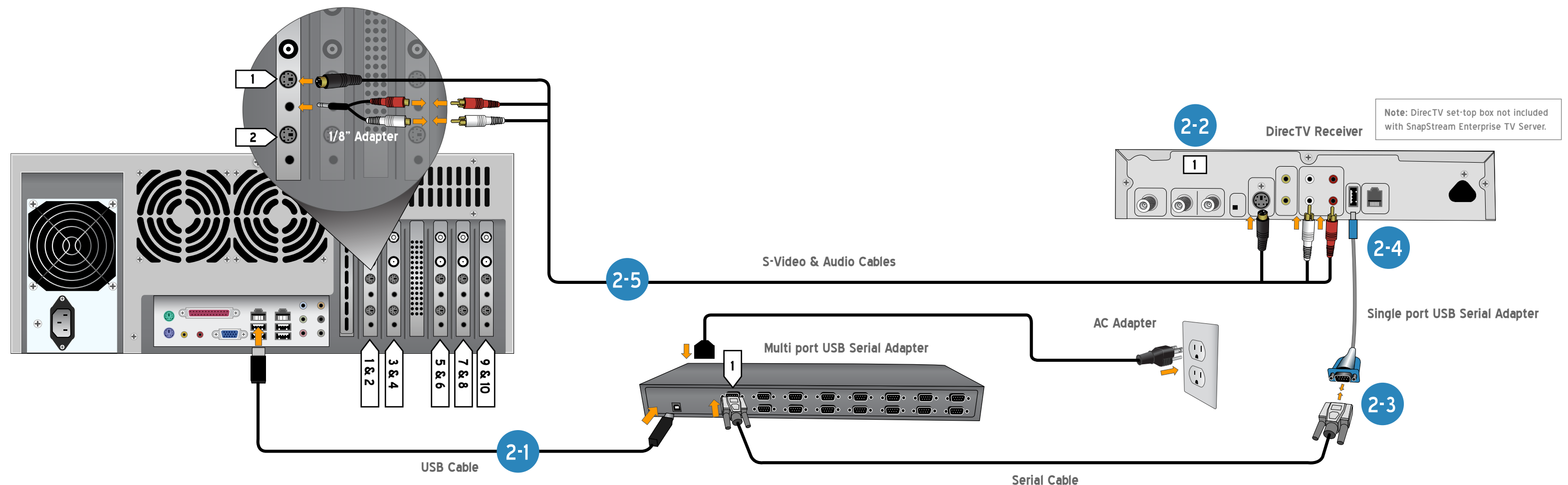
2-3 Connect serial cable labeled "1" to serial port 1 on the multi port adapter. If a single port USB serial adapter is provided, make sure that it is attached to the end of the serial cable.

2-4 Connect the serial cable to the STB labeled "1".

2-5 Use the S-video/audio cable labeled "1" and one RCA-to-1/8" adapter to connect the STB to tuner card input number "1" on the Enterprise Server. **IMPORTANT:** For each STB, the following numbers should match:

- The number on the serial port.
- The number on the serial cable.
- The number on the STB.
- The number on the S-video cable.
- The number of the tuner card input.

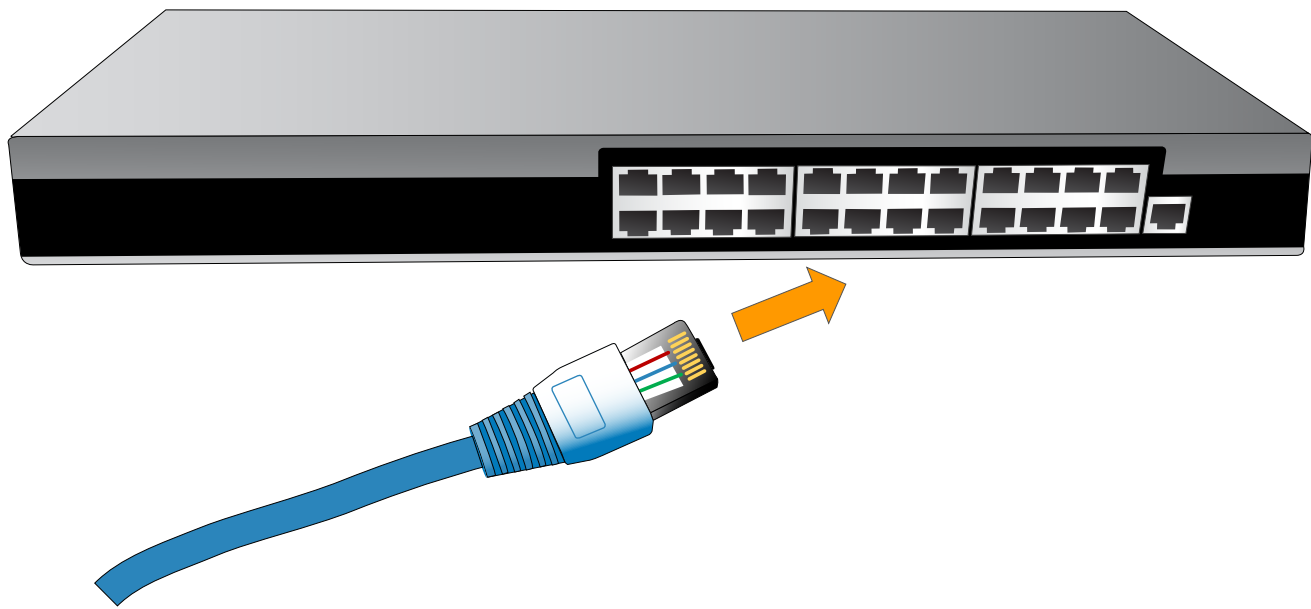
2-6 Repeat steps 2-3 through 2-5 for all remaining set-top boxes.



3

Connect Network

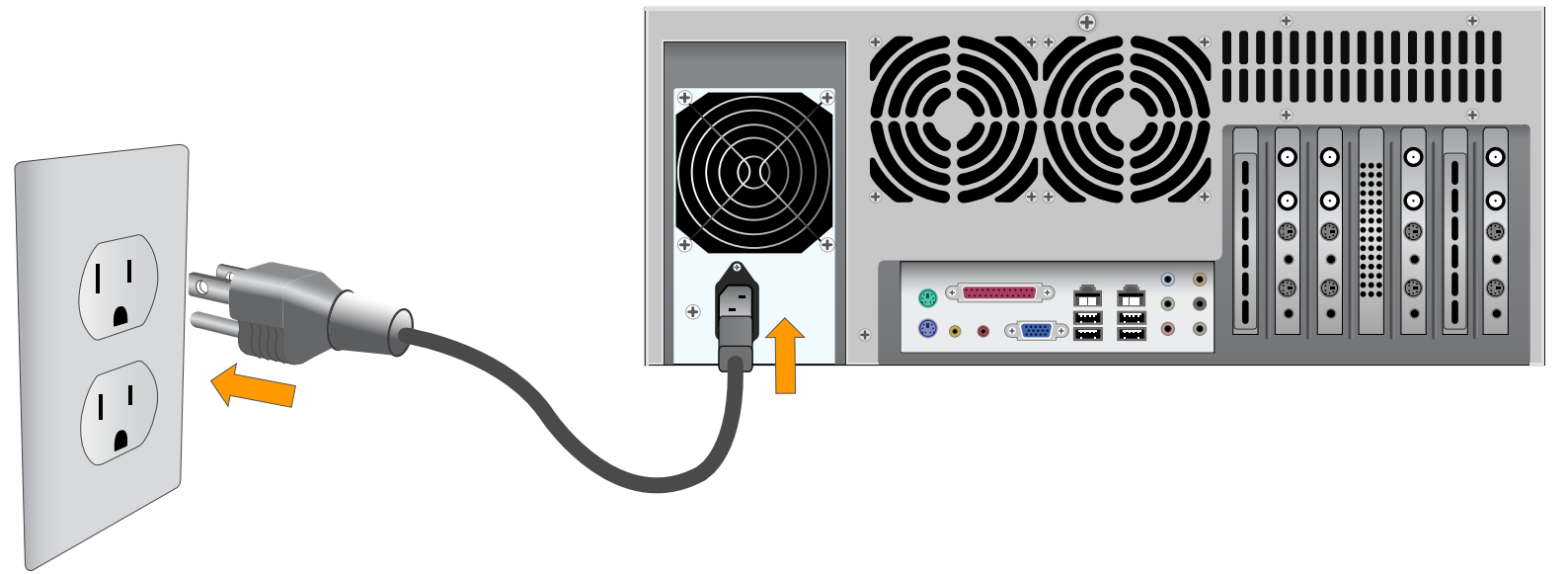
Connect the SnapStream Enterprise TV Server into the appropriate network router or switch using the supplied RJ-45 network cable.



4

Connect Power

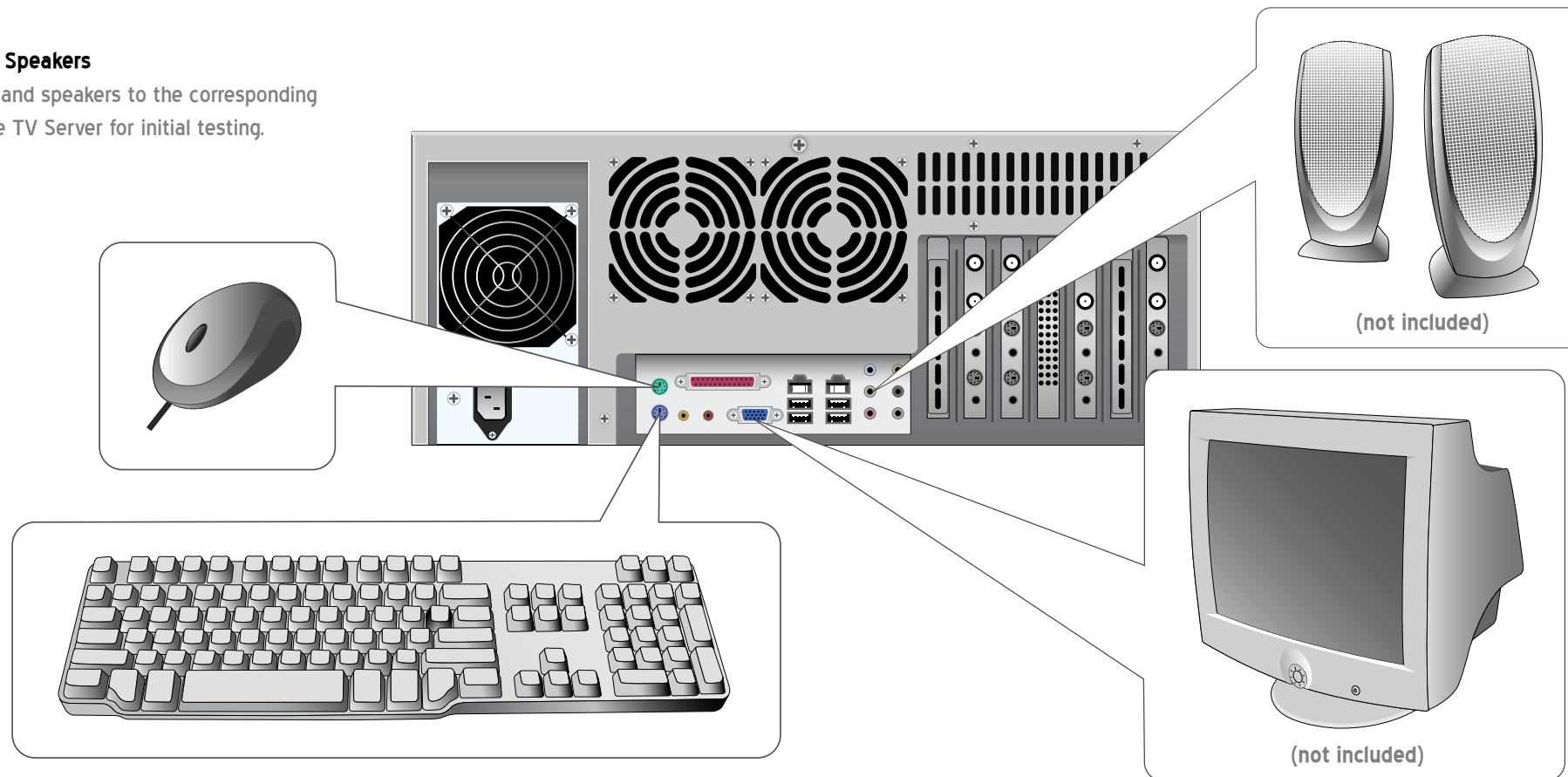
Connect the server's power cable to a 120V power source.



5

Connect Keyboard, Monitor, Mouse and Speakers

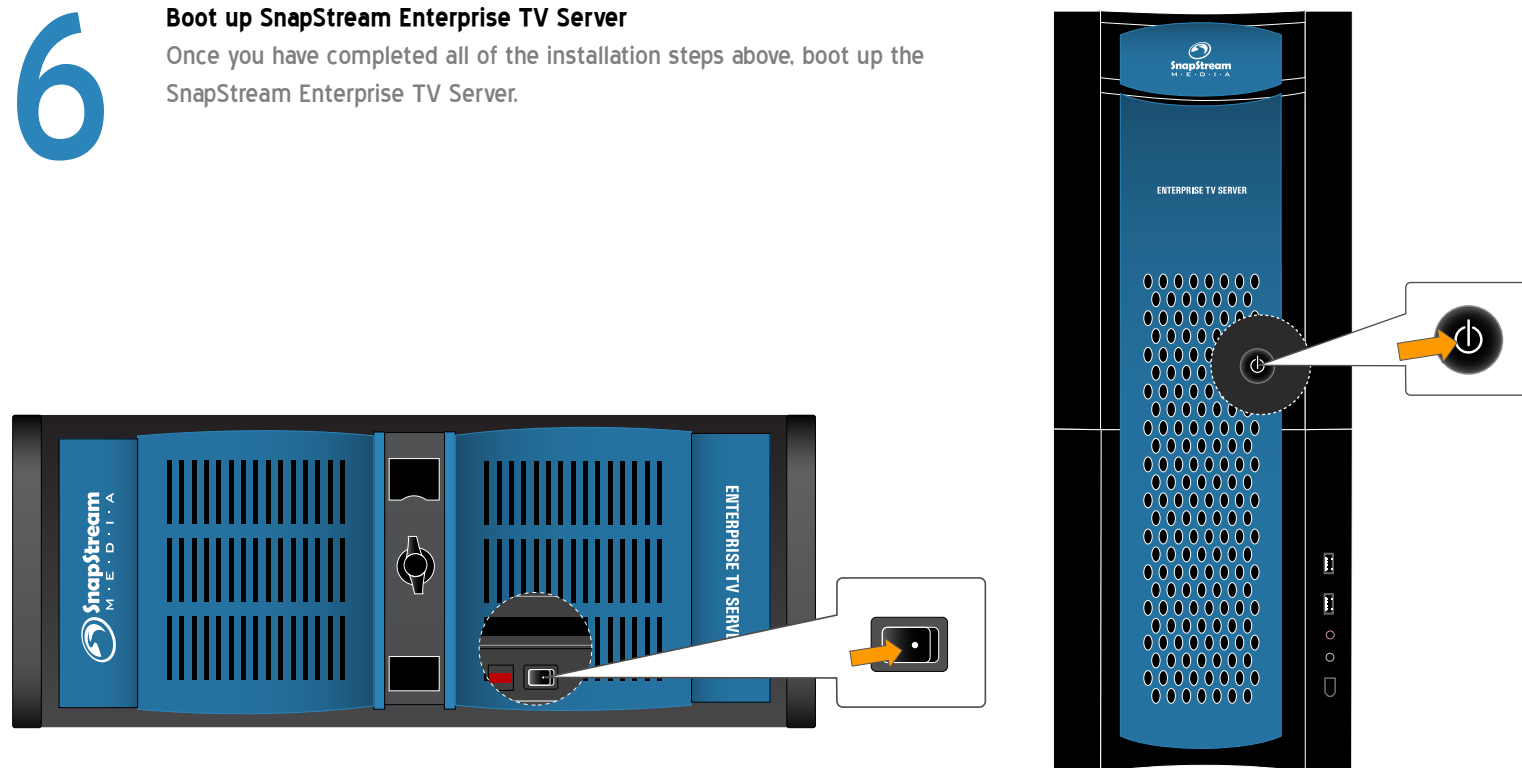
Connect a keyboard, a monitor, a mouse and speakers to the corresponding connectors on the SnapStream Enterprise TV Server for initial testing.



6

Boot up SnapStream Enterprise TV Server

Once you have completed all of the installation steps above, boot up the SnapStream Enterprise TV Server.



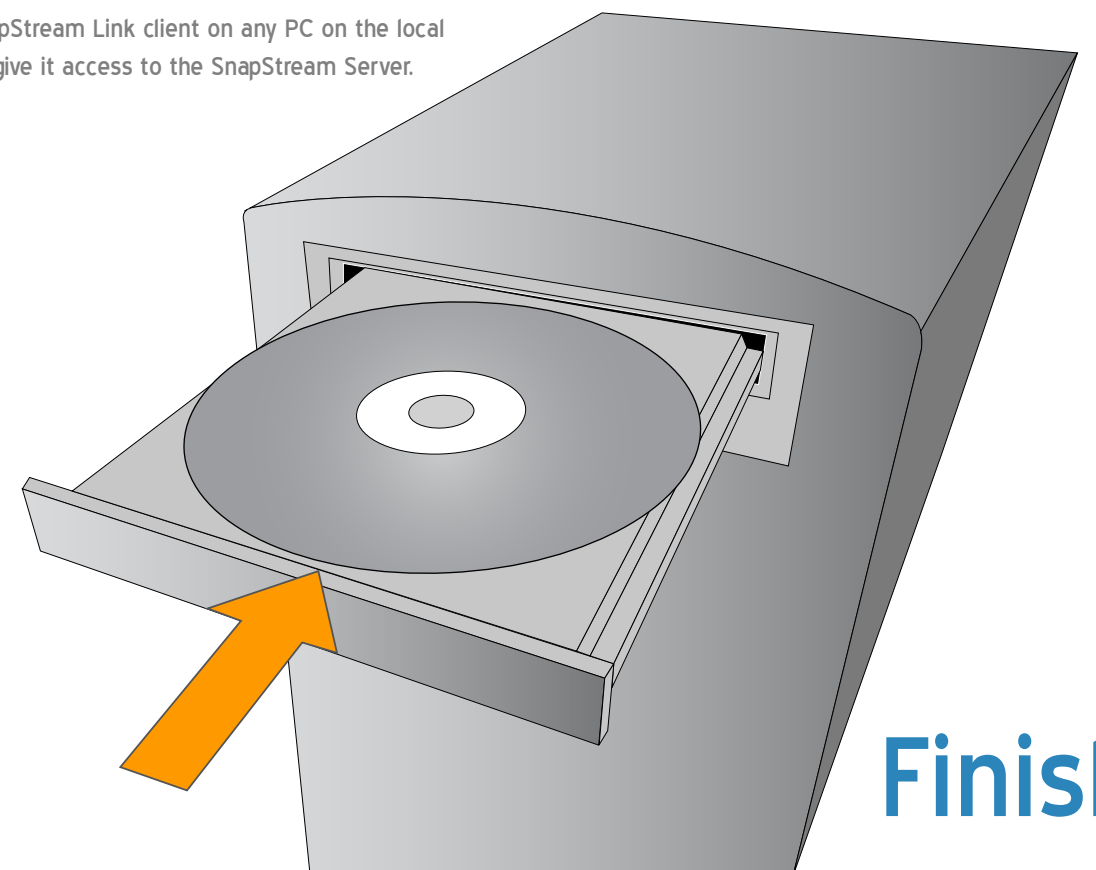
Rackmount Case

Tower Case

7

Install SnapStream Link

Install a SnapStream Link client on any PC on the local network to give it access to the SnapStream Server.



Finished!