


DIGITAL ANTENNA/HDTV OTA




1 Choose and install an ATSC / digital TV antenna

- Use www.checkhd.com to determine the required antenna type.
- Install the antenna according to the manufacturer's directions.
- Position antenna according to the information provided by the www.checkhd.com website.
- For more information, see the SnapStream HDTV Setup Center. 

2 Choose and install an ATSC / digital TV tuner

Choosing a card:

- Beyond TV only supports ATSC / digital TV tuners with BDA drivers. Most "Media Center Edition" ATSC tuners are supported.
- For a complete list of supported TV tuner cards, see the Beyond TV system requirements. 

Installing a card:

- Follow the TV tuner manufacturer's directions for installing the TV tuner.
- In a typical installation, first install the TV tuner's drivers, and then install the TV tuner itself.
- Test whether the TV tuner is working by running the bundled software (that came with the TV tuner).

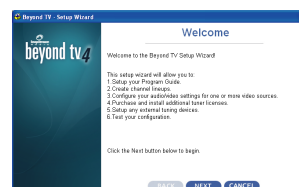
3 Connect the antenna to the ATSC / digital TV tuner

- Connect the TV tuner with the antenna using a high-quality RG-6 coaxial cable:




4 Install and configure Beyond TV

- Install Beyond TV.
- Run the Beyond TV Setup Wizard. The setup wizard covers all setup options, including TV listings and SnapStream.Net account setup.



Beyond TV's Setup Wizard

Note: A SnapStream.Net account is required to schedule recordings from any web browser or WAP-enabled cell phone.

- See complete documentation of the Beyond TV Setup wizard in the Beyond TV help file. 

Enjoy watching and recording TV with Beyond TV!