

Hauppauge WinTV-PVR-250BTW Installation Guide

For Beyond TV™ 3

The Hauppauge WinTV-PVR-250BTW is a hardware encoding TV tuner card which directly encodes into the MPEG-2 format. With the use of the Hauppauge WinTV-PVR-250BTW you will not be able to record directly to the Windows Media format or stream live TV to another computer.

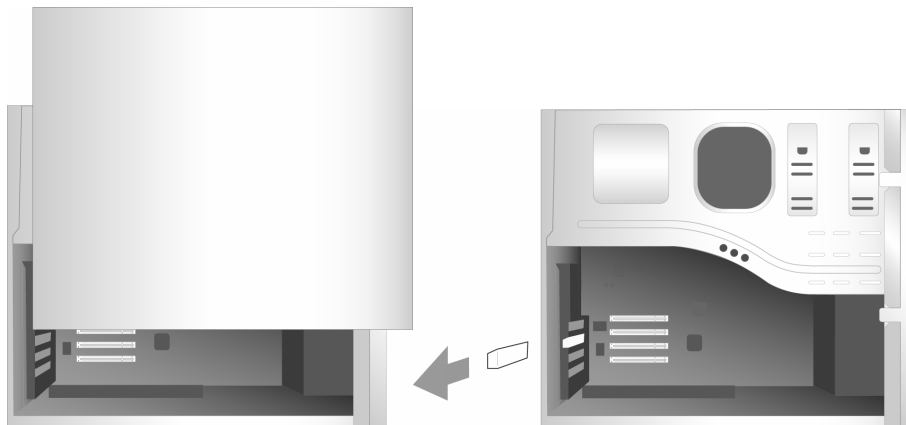
Contents of Hauppauge WinTV-PVR-250BTW Bundle

Your bundle should contain:

- ✓ OEM Hauppauge WinTV-PVR-250BTW
- ✓ SnapStream Beyond TV™ 3 CD
- ✓ Beyond TV 3 User's Guide
- ✓ Beyond TV 3 "Getting Started" Placemat
- ✓ Beyond TV 3 CD Key

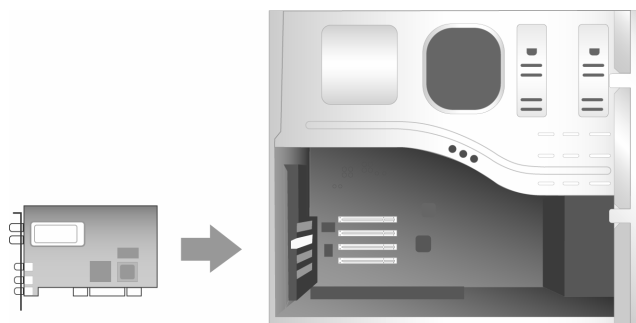


Step 1: System Preparation



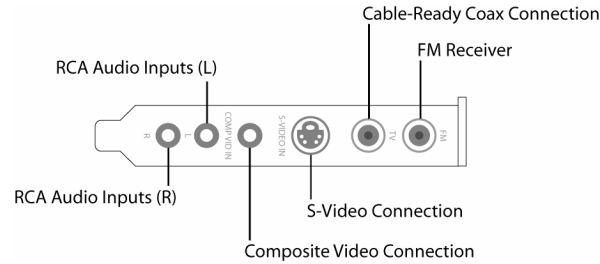
- Power off and unplug your computer.
- Remove the cover from your computer (refer to your PC's manufacturer for instructions on removing your PC's cover).
- Find a free PCI expansion slot (a short white slot).
- Remove the metal cover plate which covers the back of an empty slot.

Step 2: Install the Tuner Card



- Grasp the card by the top edge and carefully seat it firmly into the empty PCI slot.
- Screw the Hauppauge WinTV-PVR-250BTW metal cover plate to the PC.

Step 3: Connect the Tuner Card Cables

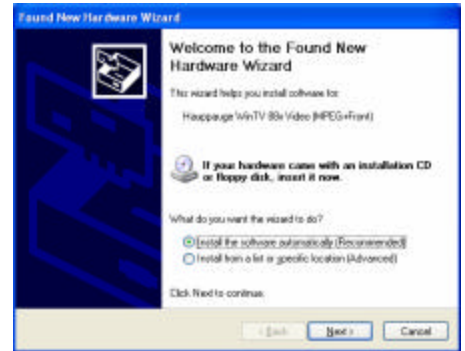


- Plug in your antenna or cable TV connection into the **Cable-Ready Coax Connector**.
 - You can use the **S-Video** or **Composite Video Connections** and **RCA Audio Inputs** if you are using an external cable or satellite box.

NOTE: The **FM Receiver** on the WinTV-PVR-250BTB is not currently supported with Beyond TV 3.

Step 4: Install the Tuner Card Drivers

- Insert your SnapStream Beyond TV™ 3 CD into your CD/DVD ROM drive.
- With Autorun enabled, the Beyond TV 3 installation window will appear automatically; please ignore this window for now.
- When starting Windows the "Found New Hardware Wizard" will appear.
- Make sure "Install the software automatically" is selected and click "Next".
- Click "Finish" after the first driver is installed.
- Repeat the last two steps for all components of the WinTV-PVR-250BTB tuner card.



Step 5: Install SnapStream Beyond TV 3

- Please follow the instructions in the SnapStream Beyond TV 3 User's Guide or "Getting Started" Placemat to install Beyond TV 3.



© Hauppauge is a Registered Trademark of Hauppauge Computer Works, Inc.